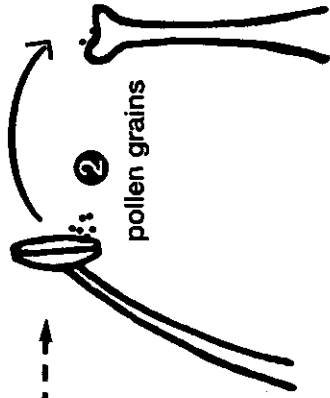
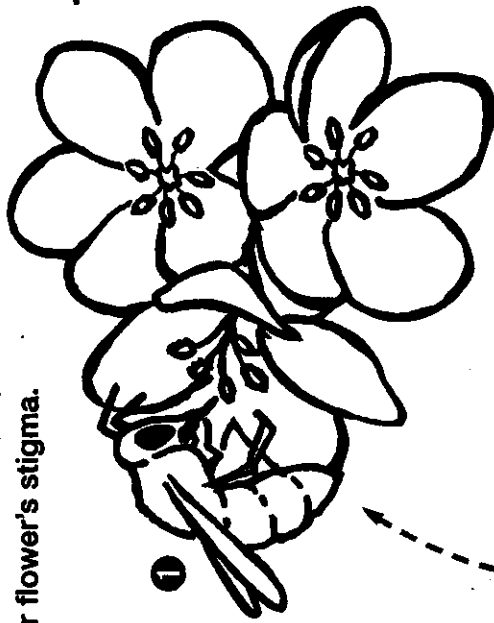
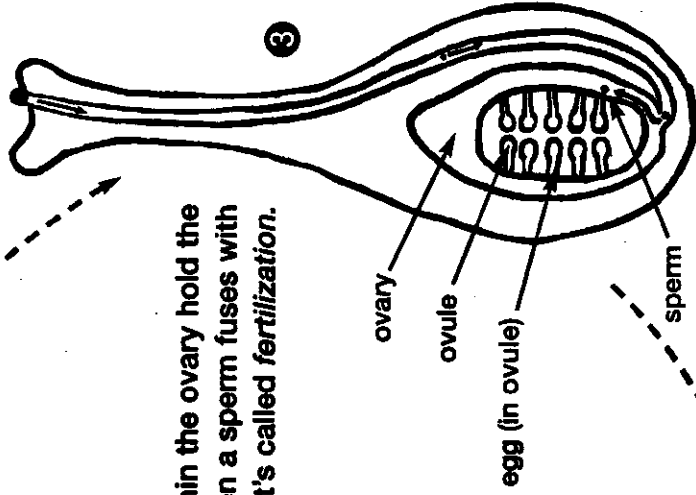


Apple Pollination Cycle

1 A pollinator, such as this honeybee, transfers pollen from one flower's stamen to another flower's stigma.



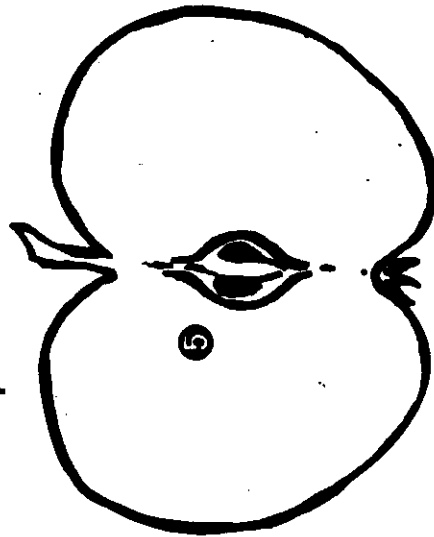
2 The pollen grain germinates and the sperm it contains travels down the flower's style until it reaches the ovary.



3 Multiple ovules within the ovary hold the apple flower's eggs. When a sperm fuses with an egg it's called fertilization.



4 Once the flower is fertilized, the petals wither and drop and the ovary begins to enlarge and develop into the apple fruit.



5 Each fertilized ovule develops into a seed.